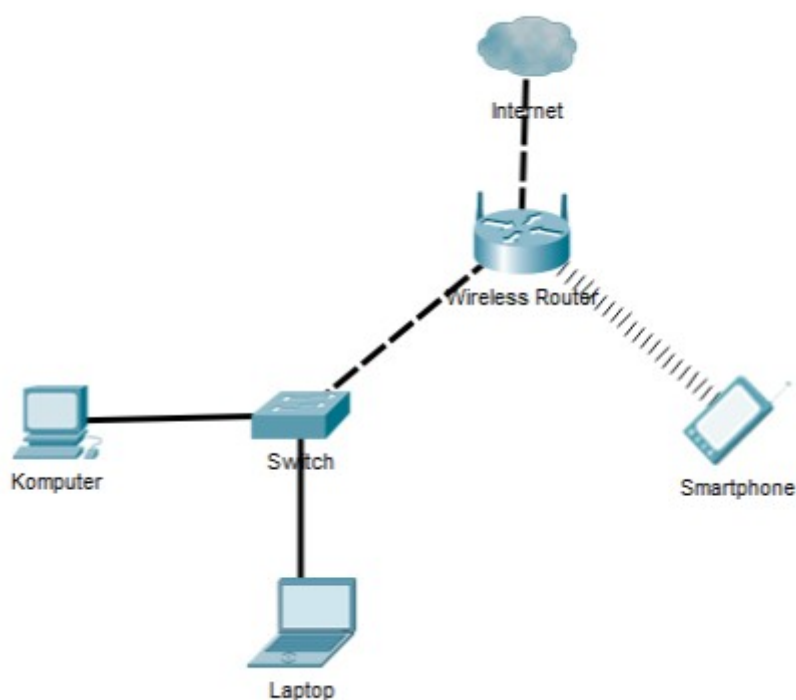


Membangun sebuah jaringan



Konfigurasi Wifi Routerboard dengan ketentuan sebagai berikut:

a. Konfigurasi VLAN pada Ether2 dengan ketentuan:

1) VLAN 1

- VLAN ID : 10

- Name : siswa

2) VLAN 2

- VLAN ID : 20

- Name : guru

b. Konfigurasi

Ether 1:

- IP Ether1 : Sesuai dengan Network yang diberikan ISP

- Gateway : Sesuai dengan IP yang diberikan ISP

Ether 2 digunakan untuk jaringan LAN:

a) VLAN 1

- IP VLAN 1 : 192.168.40.1/24

- DHCP Pool : 192.168.40.10 – 192.168.40.50

b) VLAN 2

- IP VLAN 2 : 192.168.60.1/24

- DHCP Pool : 192.168.60.10 – 192.168.60.50

WLAN :

- IP WLAN : 192.168.20.1/24

- SSID : UKK_Nama

- Password : 12345678

- DHCP Pool : 192.168.20.10 – 192.168.20.50

- Hotspot : alamat login hotspot = portalsmk.sch.id

- Ubah tampilan halaman login hotspot sehingga minimal terdapat tampilan tulisan:

“Selamat Datang di Hotspot PeTIK”

Hasilnya

Untuk hasil dari Vlan1 port 2 dan port 3 mendapatkan rentang ip 192.168.40.10 – 192.168.40.50

```
petik-09@petik-09:~$ ip a
1: lo: <LOOPBACK,UP,LOWER_UP> mtu 65536 qdisc noqueue state UNKNOWN group
    default qlen 1000
    link/loopback 00:00:00:00:00:00 brd 00:00:00:00:00:00
    inet 127.0.0.1/8 scope host lo
        valid_lft forever preferred_lft forever
    inet6 ::1/128 scope host noprefixroute
        valid_lft forever preferred_lft forever
2: enp2s0: <BROADCAST,MULTICAST,UP,LOWER_UP> mtu 1500 qdisc pfifo_fast sta
    group default qlen 1000
    link/ether d8:5e:d3:62:9b:86 brd ff:ff:ff:ff:ff:ff
    inet 192.168.40.50/24 brd 192.168.40.255 scope global dynamic noprefix
    enp2s0
        valid_lft 541sec preferred_lft 541sec
    inet6 fe80::2e4d:5f94:5ee7:195b/64 scope link noprefixroute
        valid_lft forever preferred_lft forever
3: virbr0: <NO-CARRIER,BROADCAST,MULTICAST,UP> mtu 1500 qdisc noqueue stat
    group default qlen 1000
```

Dan mendapatkan internet

```

petik-09@petik-09:~$ ping 8.8.8.8
PING 8.8.8.8 (8.8.8.8) 56(84) bytes of data.
64 bytes from 8.8.8.8: icmp_seq=1 ttl=111 time=15.6 ms
64 bytes from 8.8.8.8: icmp_seq=2 ttl=111 time=15.3 ms
^C
--- 8.8.8.8 ping statistics ---
2 packets transmitted, 2 received, 0% packet loss, time 1002ms
rtt min/avg/max/mdev = 15.302/15.433/15.565/0.131 ms

```

Untuk hasil dari Vlan 2 port 4 mendapatkan rentang ip 192.168.60.10 – 192.168.60.50

```

petik-09@petik-09:~$ ip a
1: lo: <LOOPBACK,UP,LOWER_UP> mtu 65536 qdisc noqueue state UNKNOWN group default qlen 1000
    link/loopback 00:00:00:00:00:00 brd 00:00:00:00:00:00
    inet 127.0.0.1/8 scope host lo
        valid_lft forever preferred_lft forever
    inet6 ::1/128 scope host noprefixroute
        valid_lft forever preferred_lft forever
2: enp2s0: <BROADCAST,MULTICAST,UP,LOWER_UP> mtu 1500 qdisc pfifo_fast state UP group default qlen 1000
    link/ether d8:5e:d3:62:9b:86 brd ff:ff:ff:ff:ff:ff
    inet 192.168.60.50/24 brd 192.168.60.255 scope global dynamic noprefixroute
        enp2s0

```

Dan mendapatkan internet

```

petik-09@petik-09:~$ ping 8.8.8.8
PING 8.8.8.8 (8.8.8.8) 56(84) bytes of data.
64 bytes from 8.8.8.8: icmp_seq=1 ttl=111 time=15.6 ms
64 bytes from 8.8.8.8: icmp_seq=2 ttl=111 time=15.3 ms
^C
--- 8.8.8.8 ping statistics ---
2 packets transmitted, 2 received, 0% packet loss, time 1002ms
rtt min/avg/max/mdev = 15.302/15.433/15.565/0.131 ms

```

Untuk hasil hostpotnya

Login ke ukk_ilmianur

portalsmk.sch.id



Selamat Datang Di Hostpot PeTIK

